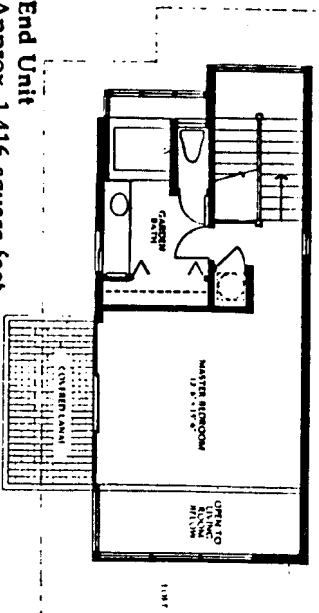
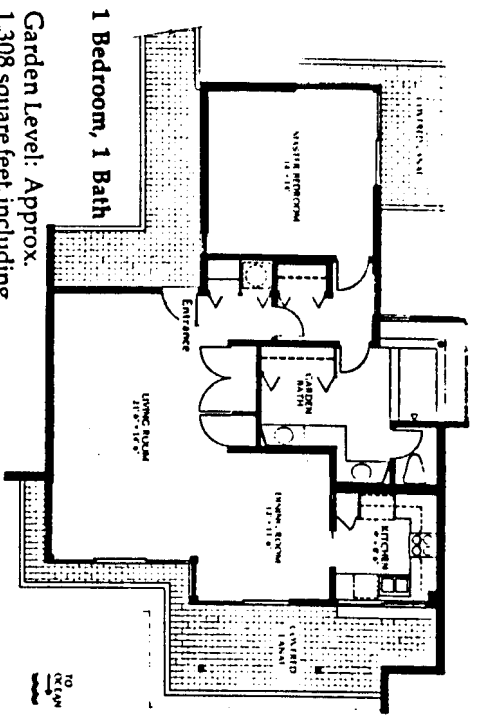


Kapalua Bay Villas

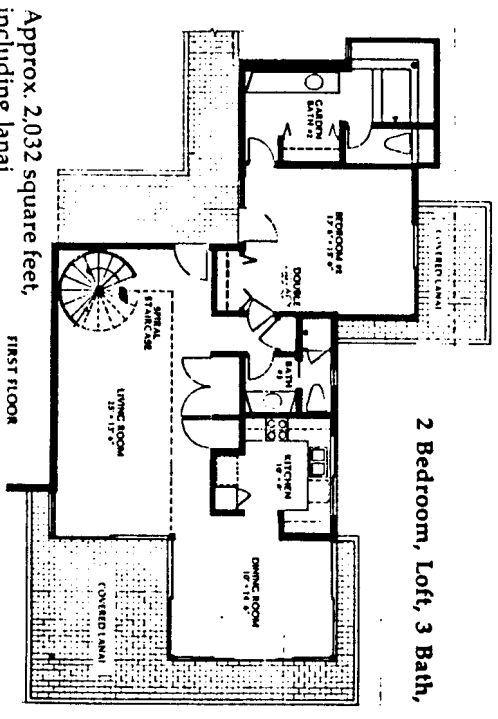


End Unit
 Approx. 1,416 square feet,
 including lanai.
Interior Unit
 Approx. 1,209 square feet,
 including lanai.

SECOND FLOOR

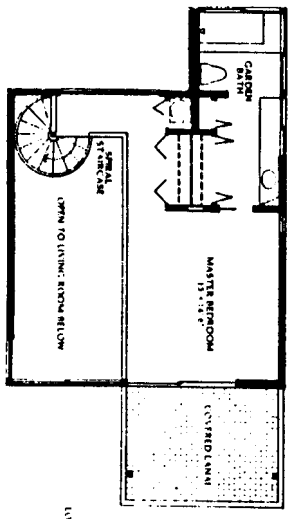


1 Bedroom, 1 Bath
 Garden Level: Approx.
 1,308 square feet, including
 lanai. Bridge Level: (shown)
 approx. 1,273 square feet,
 including lanai.

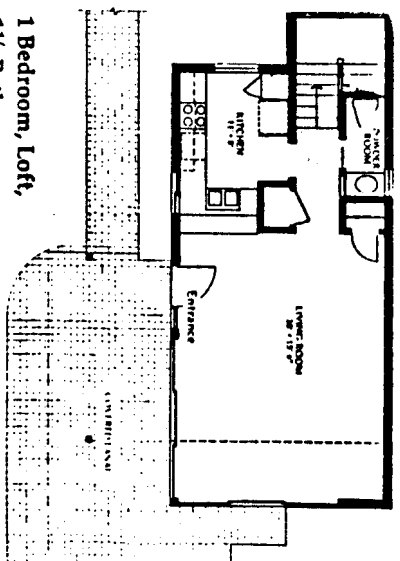


2 Bedroom, Loft, 3 Bath,
 Approx. 2,032 square feet,
 including lanai.

FIRST FLOOR

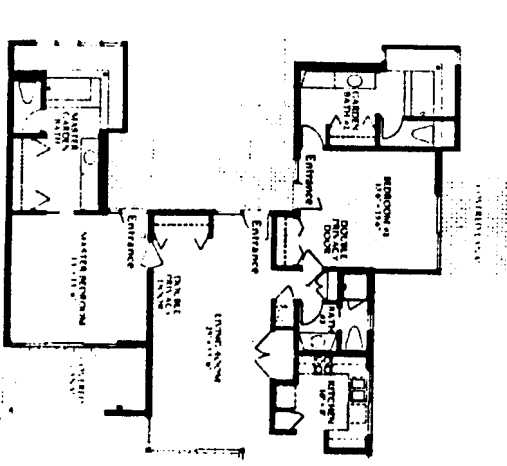


SECOND FLOOR



1 Bedroom, Loft,
1 1/2 Bath,

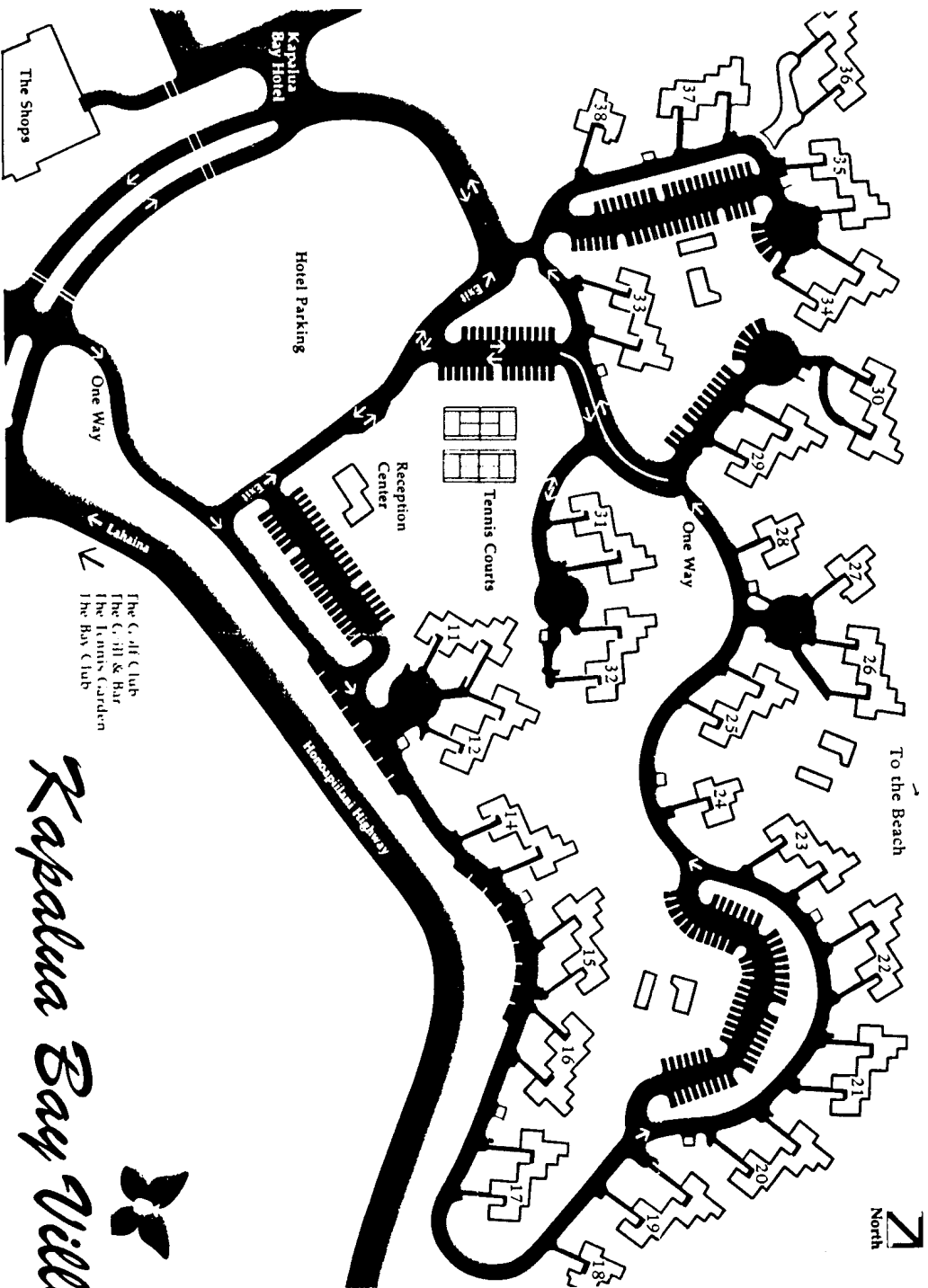
FIRST FLOOR



2 Bedroom, 3 Bath,

Prudential
Maui Realtors

*Prudential
Maui Realtors*



Kapalua Bay Villas





Where the sea meets white-sand beaches, there exists an exceptional property: The Bay Villas, an oceanfront cluster of one- and two-bedroom condominium residences offered with the style and commitment to excellence that are distinctively Kapalua.

A shoreline community, The Bay Villas is designed to give residents maximum privacy. Owners and guests enjoy exclusive use of a

number of amenities, including three swimming pools, covered recreation areas complete with barbecues, and two private on-site tennis courts.

Bay Villas residences are designed to take advantage of Kapalua's spectacular surroundings. Lush, private entries, high ceilings and dramatic ocean views provide a sense of almost limitless space.

Kapalua Place

From the white sand beach at Oneloa Bay on Maui, the offshore islands of Molokai and Lanai shimmer on the horizon. Here is your view of the world from Kapalua Place, an exclusive single-family subdivision on the master-planned resort of Kapalua.

A development of Kapalua Land Company, Ltd., Kapalua Place comprises eight $\frac{1}{2}$ to $1\frac{1}{2}$ acre lots. This fee simple beachfront property is located on ten acres resting between The Ironwoods and The Bay Villas.

Upon entering Kapalua Place, the feeling of privacy is evident. Walls of blue rock surround the property and divide the lots. Custom designed wrought iron gates usher dramatic entry into the project, as well as entry to each homesite. A single cul-de-sac roadway consisting of a European-style staggered paved surface brings a unique element to Kapalua.

Home designs may be individually fashioned by the owner, yet in keeping with existing architecture at Kapalua, specific constraints will be applied. For instance, a unique prerequisite for the homes at Kapalua Place requires standing seam copper roofing to compliment the existing roof lines on the bordering projects. The roofs at Kapalua Place will carry the same pitch and color, but offer a different material which will provide a classic patina.

Kapalua Place is a rare opportunity to become part of one of the world's greatest resorts on one of the last beachfront properties on Maui.

Kapalua Place, Kapalua, Maui
Your place in paradise.

