

On a promontory overlooking the bay, trim fairways curve against pineapple fields of darker green. At the crest is an exceptional property named The Ridge. Surrounded by thousands of acres of resort, pineapple plantation and wooded mountain-side, this cluster of one and two story condominiums offers an incomparable residential opportunity, in the tradition of excellence that is distinctively Kapalua.

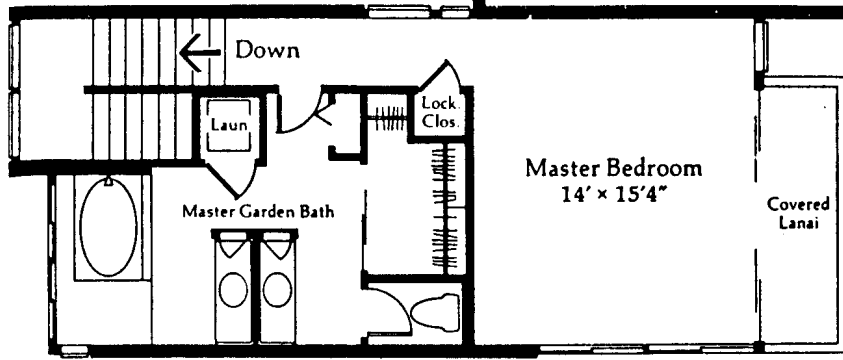
Each low-rise building houses five or six residences—designed for low density and

optimum privacy. Amenities provided for owners and guests include two recreation areas with fresh-water swimming pools and gas barbecues, a reception center, and a resident manager's apartment.

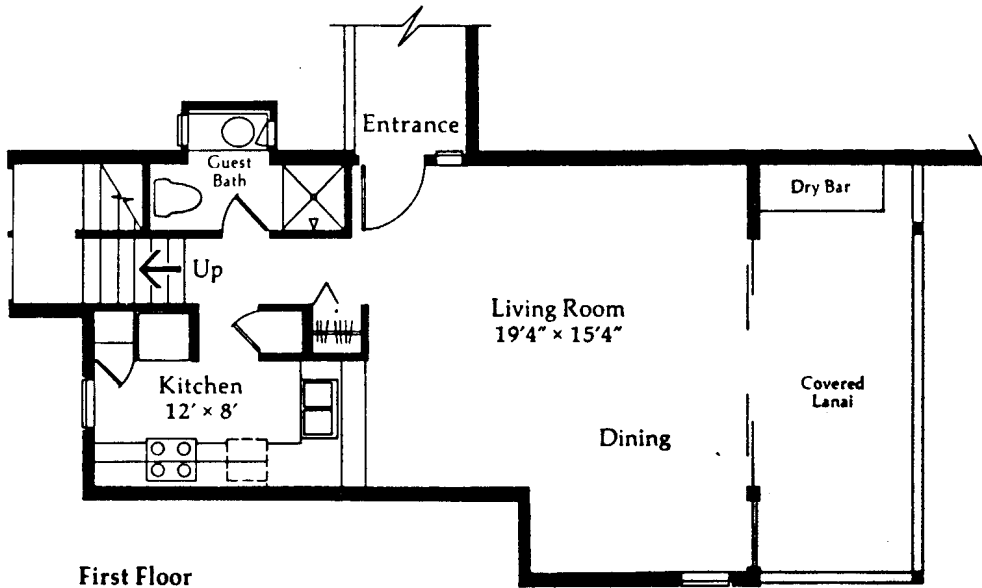
Interiors are gracious, comfortable, efficient and luxurious as well. High ceilings, dramatic wraparound views, and extra large, sheltered lanais create a spacious and airy indoor environment. The Ridge at Kapalua is island elegance at its best.



1 bedroom Townhouse

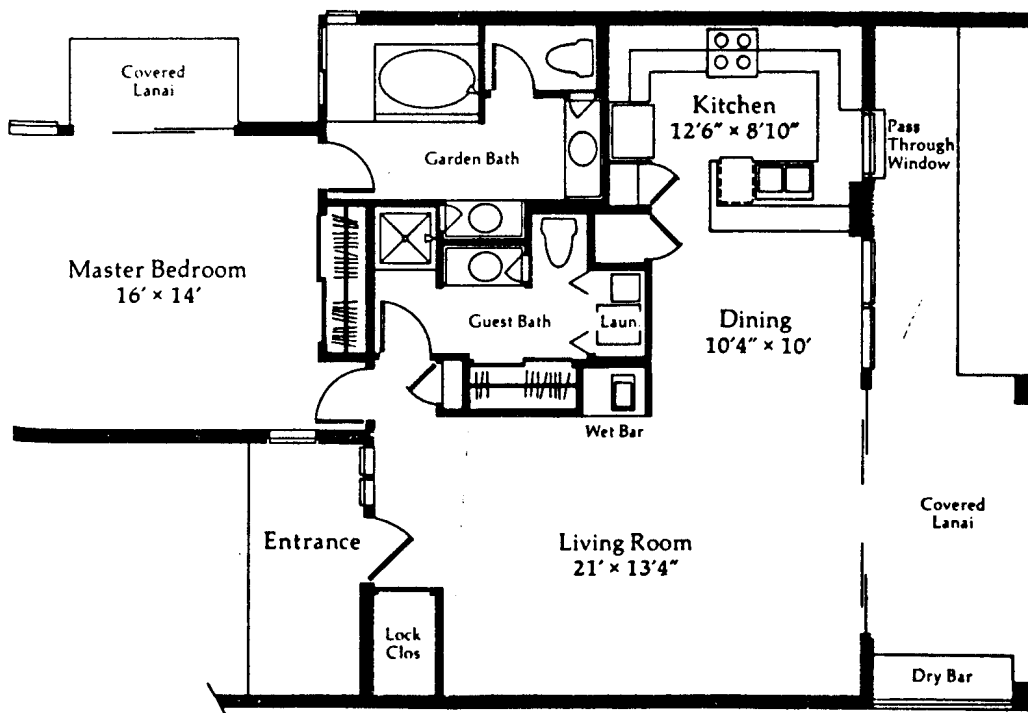


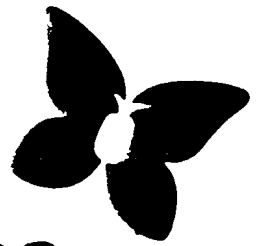
Second Floor



First Floor

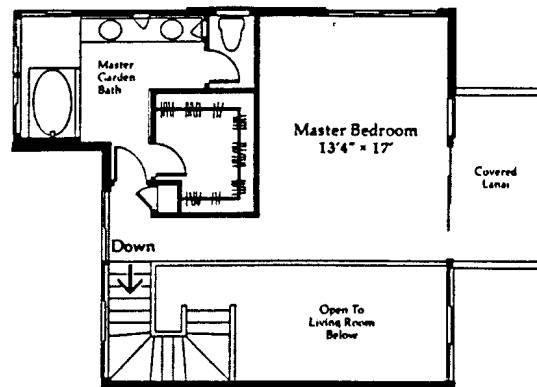
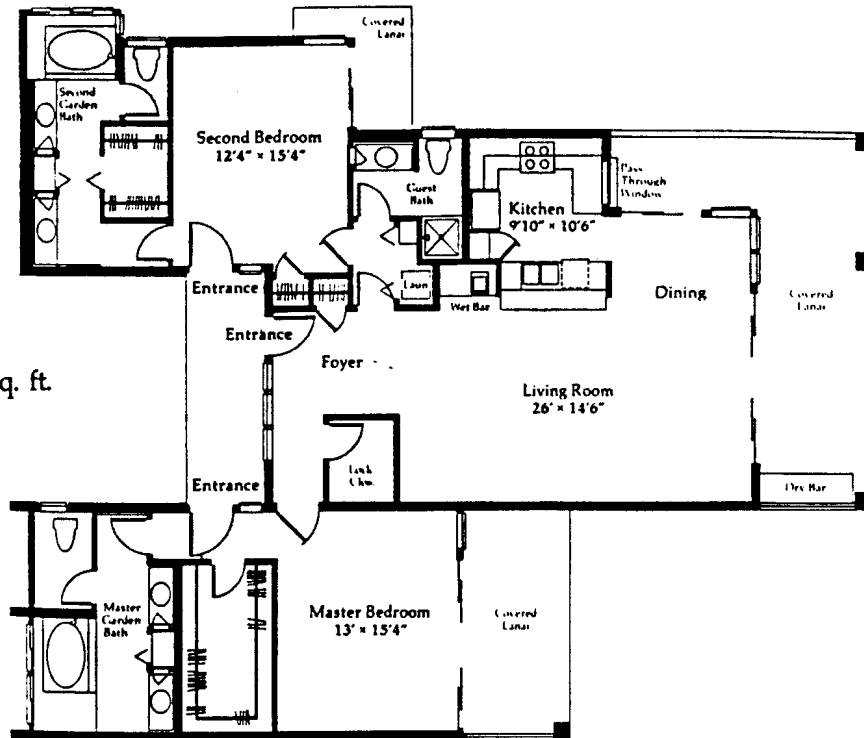
1 bedroom, 2 bath





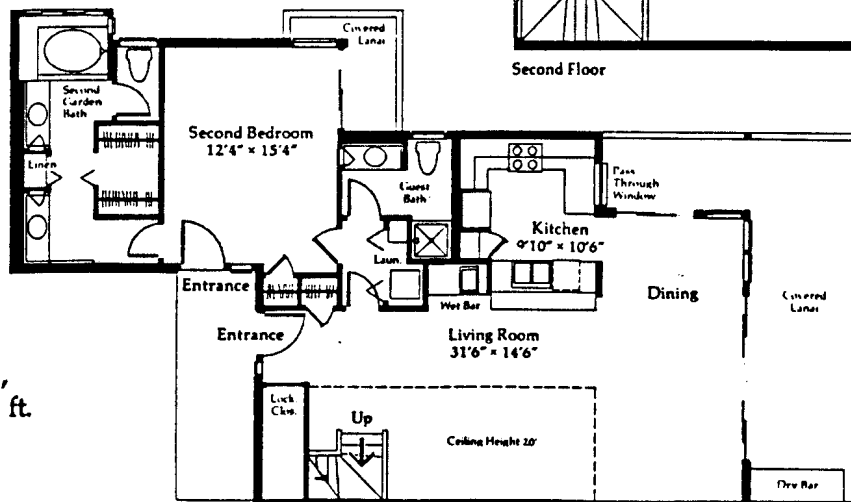
The Ridge

**2 Bedroom, 3 Bath,
Approximately 2,225 sq. ft.**

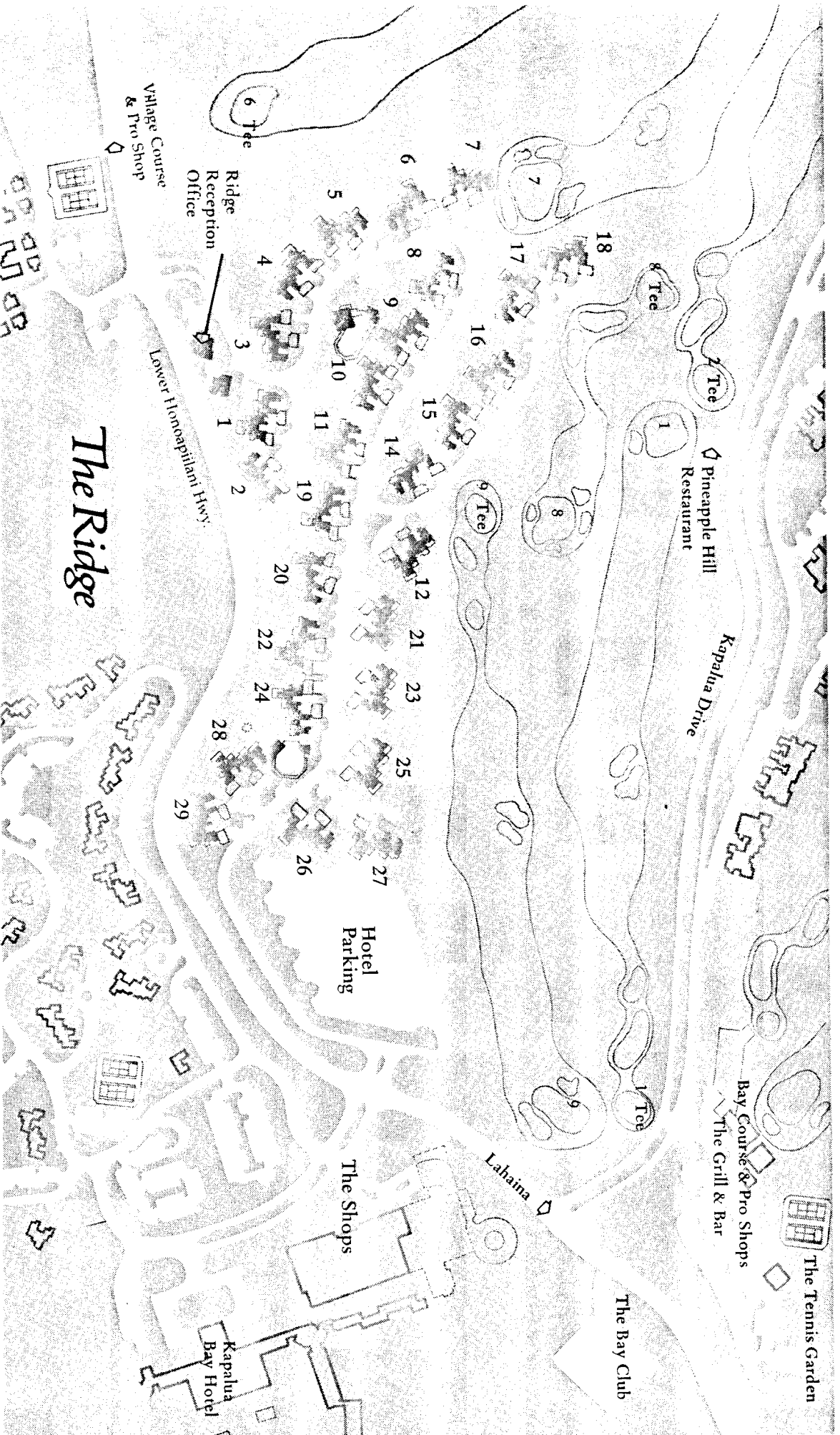


Second Floor

**2 Bedroom, Loft, 3 Bath,
Approximately 2,160 sq. ft.**



First Floor



The Prudential Maui Realtors